

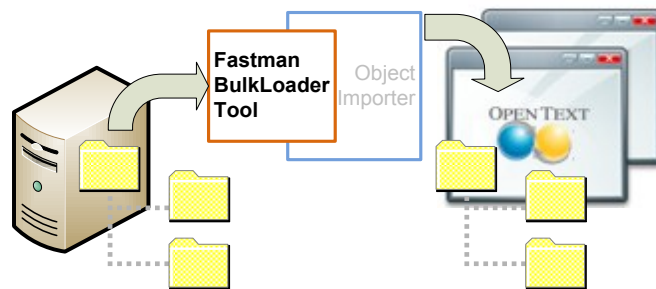
Fastman Consulting and Solutions

# BulkLoader Tool

Migration of data from your file server to your Open Text ECM system can be time consuming, complex and overly reliant on technical staff who have little understanding of the data or it's business context.

The BulkLoader Tool for Open Text Object Importer™ addresses these issues. It enables users to directly control what content is migrated and the structure it will be created under, and provides administrators with the controls they need to manage the migration process in parallel for multiple users or groups.

Important metadata such as the file create date and owner is retained and mapped to the equivalent fields in Open Text Content Server. Alternatively ownership can be defaulted to the system Administrator where the user owning the file on the file system does not exist in Content Server.



The tool can also be configured to accept a starting folder and create a control file for both files and folders under it, assisting migration of an existing folder structure and sub-content in its entirety. The tool recursively traverses a selected file system folder structure that mirrors the Content Server folder structure (entirely or from a defined point), creating entries for each file it finds in the folder structure.

Inheritance of existing permissions, categories and records management classifications is a key aspect of data migration for many organisations. The BulkLoader tool handles this requirement, seamlessly applying these to content as it is migrated.

**Complete Content Management**

OPEN TEXT  
PLATINUM  
PARTNER

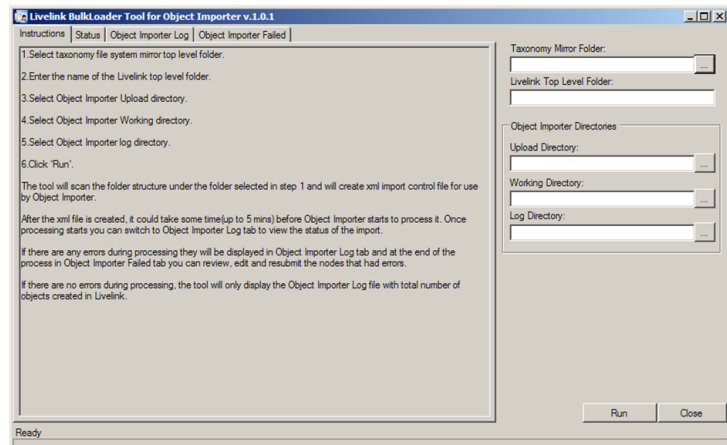
**FastMan**  
Consulting and Solutions

Fastman Consulting and Solutions

# BulkLoader Tool

The Fastman BulkLoader Tool for Object Importer is a windows application that creates the necessary import control files for migrating content using Open Text Object Importer module. Based on Microsoft's .NET Framework, the Fastman Bulk Loader is readily extensible to meet specific customer requirements.

In operation, the tool is installed and executed by the System Administrator and users are advised of the process to identify, sort and create migration data sets. When completed, the users simply advise the System Administrator who executes the import process using a simple user interface as shown. This process may also be delegated to document controllers or power users.



To support efficient handling of the inevitable processing errors encountered in any data migration, the tool produces a discrete record of import failures which can then be re-submitted once the errors are corrected using standard functionality. As with the initial creation of the import data sets business data related issues can be handled by end users and technical issues by the System Administrators. Detailed logs of all transactions are maintained for all processing.

System requirements consist of Microsoft .NET Framework Version 2.0, Open Text Content Server 9.5.0 SPI or higher, Object Importer 4.1.1 or higher, and Read/write access to Object Importer folders for the person running the tool.

Fastman Consulting and Solutions is a Platinum member of the Open Text Global Partner Program. Based in Melbourne Australia our consultants have over 50 years experience implementing, supporting and extending Open Text ECM systems.

13 Williams St  
Cremorne Vic 3121  
P.O. Box 156  
Surrey Hills Vic 3127  
Australia

Phone: +61 3 9274 3900  
Fax: +61 3 9274 3999  
E-mail: [sales@fastman.net.au](mailto:sales@fastman.net.au)  
Web: [www.fastman.net.au](http://www.fastman.net.au)

 **FastMan**  
Consulting and Solutions